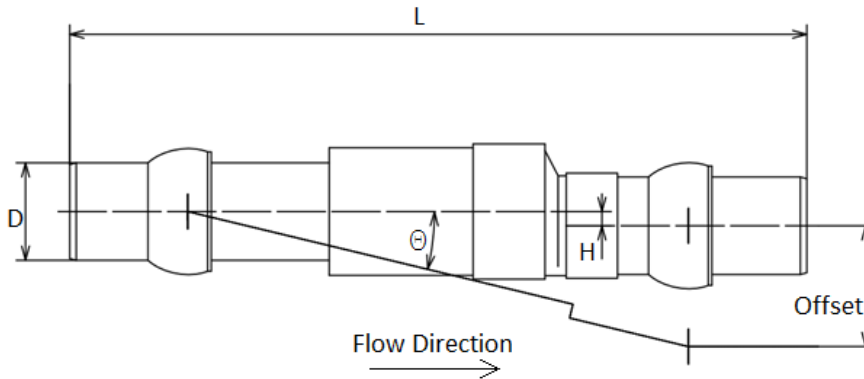
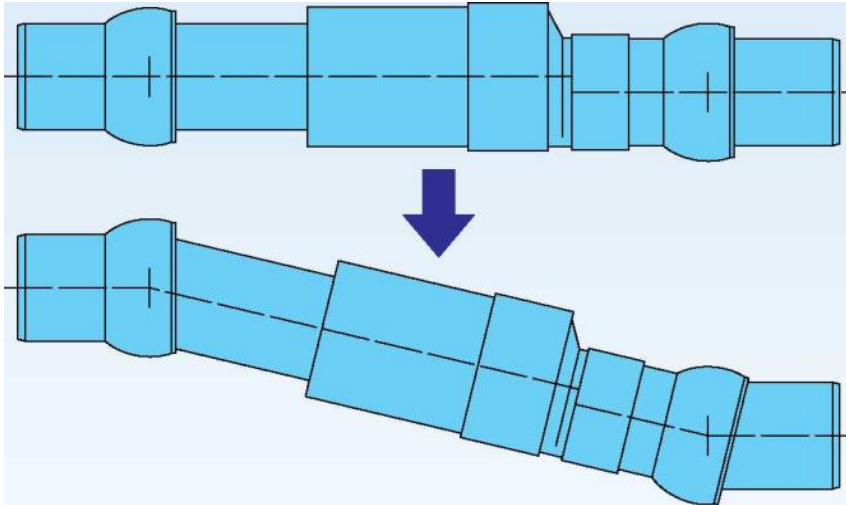


Flexible Expansion Joint for Gravity Drain Pipelines



Features and Applications:

- Sizes 3 inch through 8 inch
- For use in drain, waste, and vent (DWV) non-pressurized piping.
- It is important for the connections to be restrained (mechanically or solvent weld) so that movement of the pipeline can be transferred to the PVC Flex-Tend as intended
- Designed to give Deflection and or Expansion/Contraction needs to protect pipeline systems from shear. Refer to submittal drawings for "offset" capability
- Up to 15° Deflection per ball
- 4 inch and 8 inch linear travel models available
- Constructed of PVC
- End connection O.D.s are compatible with ASTM D1785/D2665 and F891 PVC pipe and are to be solvent welded - Adapters are available for transitioning to ASTM D3034 pipe O.D. Check with your local supplier
- Pressure capable FLEX-TENDS available at www.ebaa.com

Dimensional Table

Nominal Pipe Size	End Connection O.D. D	Deflection, Per Ball (Degrees)	Laying Length L	Offset	H	Assembly Number
3	3.50	13	28.35 (+7.87, -2.16)	4.00	0.75	PV403PE4*
3	3.50	13	42.13 (+7.87, -2.16)	8.00	0.75	PV403PE8
4	4.50	15	32.28 (+5.71, -2.16)	4.00	0.47	PV404PE4*
4	4.50	15	44.09 (+5.71, -2.16)	8.00	0.47	PV404PE8
6	6.63	15	41.34 (+5.71, -2.16)	4.00	0.84	PV406PE4*
6	6.63	15	49.21 (+5.71, -2.16)	8.00	0.84	PV406PE8
8	8.63	15	45.28 (+4.13, -1.77)	4.00	0.96	PV408PE4*
8	8.63	15	51.18 (+4.13, -1.77)	8.00	0.96	PV408PE8

All dimensions are in inches and are subject to change without notice.
*Special Order - Nonstock Item

EBAA Iron Sales, Inc.

P.O. Box 857 • Eastland, Texas 76448 • 800-433-1716 • 254-629-1731 • contact@ebaa.com • www.ebaa.com