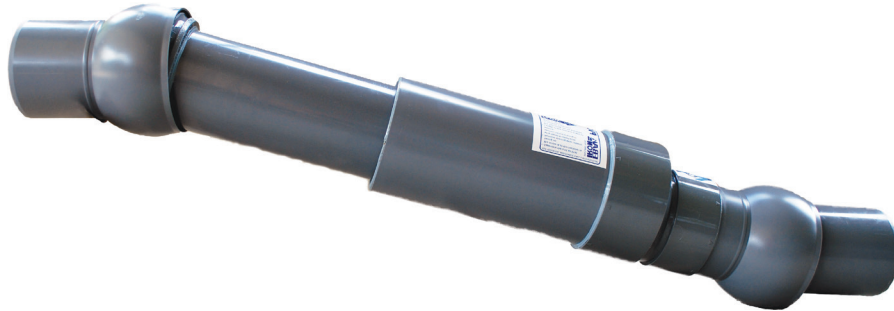
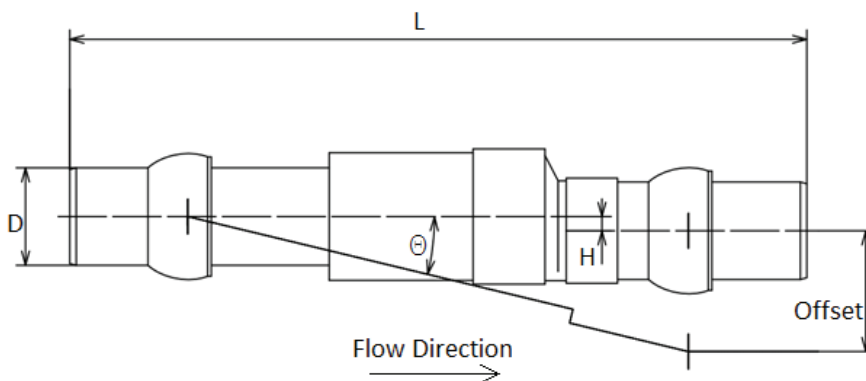
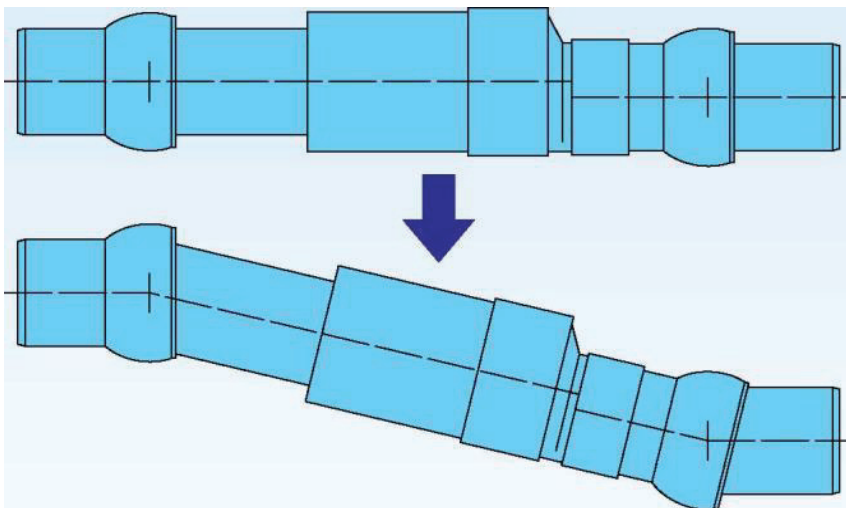


Flexible Expansion Joint for Gravity Drain Pipelines



Features and Applications:

- Sizes 3 inch through 8 inch
- For use in drain, waste, and vent (DWV) non-pressurized piping
- It is important for the connections to be restrained (mechanically or solvent weld) so that movement of the pipeline can be transferred to the FLEX-TEND as intended
- Designed to give Deflection and or Expansion/Contraction needs to protect pipeline systems from shear. Refer to submittal drawings for "offset" capability
- Up to 15° Deflection per ball
- Constructed of PVC
- End connection O.D.s are compatible with ASTM D1785/D2665 and F891 PVC pipe and are to be solvent welded - Adapters are available for transitioning to ASTM D3034 pipe O.D. Check with your local supplier
- Pressure capable FLEX-TENDS available at www.ebaa.com
- DWV Flex-Tend product must not be subjected to temperatures in excess of 140° F. Do not store near heat sources. Product must be stored under cover and away from the heat of the sun. If this product is exposed to excessive heat, product deformation will result and render the product unusable.
- Do not stack other products on top of the DWV Flex-Tend.



Dimensional Table

Nominal Pipe Size	End Connection O.D. D	Deflection, Per Ball (Degrees)	Laying Length L	Offset	H	Assembly Number
3	3.50	13	42.13 (+7.87, -2.16)	8.00	0.75	PV403PE8
4	4.50	15	44.09 (+5.71, -2.16)	8.00	0.47	PV404PE8
6	6.63	15	49.21 (+5.71, -2.16)	8.00	0.84	PV406PE8
8	8.63	15	51.18 (+4.13, -1.77)	8.00	0.96	PV408PE8

All dimensions are in inches and are subject to change without notice.

EBAA Iron Sales, Inc.

P.O. Box 857 • Eastland, Texas 76448 • 800-433-1716 • 254-629-1731 • contact@ebaa.com • www.ebaa.com