



Series 1106SDSS16

6 inch Split MEGALUG® Restraint

With M.J. Accessories

For Ductile Iron Pipe

For Regular or Compact Fittings

Spec-ANSI/AWWA C110/A21.10 or Spec-ANSI/AWWA C153/A21.53

CONTAINS ALL DOMESTIC HARDWARE

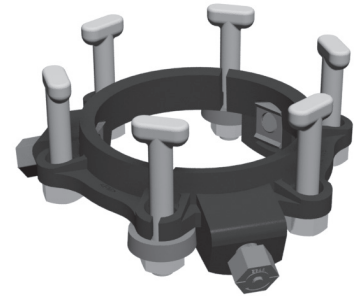
Installation Instructions

The EBAA Iron Series 1100SD is designed for restraining existing mechanical joint pipe or fittings. (This product is not intended for use as a restraining anchor in the mid span of a pipe. Refer to Series 1100SDB.)

1. Clean and clear the existing joint. Replace the existing gasket with a field cut gasket if necessary. Lubrication and additional cleaning should be provided by brushing both the gasket and the plain end with soapy water or an approved pipe lubricant meeting the requirements of ANSI/AWWA C111/A21.11.

Note: In cold weather, it is preferable to warm the gasket to facilitate assembly of the joint

2. Remove the clamps from the split gland. Loosely assemble the halves on the pipe by installing the t-bolts hand tight everywhere except at each split.
3. Assemble each clamp so that the angled surfaces of the clamp mate with the angled surfaces on each side of the split. Insert the long t-bolts (provided) through the clamps and tighten hand tight.
4. Tighten the t-bolts. Tighten the bolts to the normal range of bolt torque [45-60 ft-lbs for 3", 75-90 ft-lbs for 4" through 24", 100-120 ft-lbs 30" through 36", and 120-150 ft-lbs for 42" through 54"] while at all times maintaining approximately the same distance between the gland and the face of the flange at all points around the socket. This can be accomplished by partially tightening the bottom bolt first, then the top, next bolts at either side, finally the remaining bolts. Repeat the process until all bolts are within the appropriate range of torque. The use of a torque indicating wrench will facilitate this procedure.
5. Tighten the torque limiting twist off nuts in a clockwise direction (direction indicated by arrow on top of nut) until all wedges are in firm contact with the pipe surface. Continue tightening in an alternate manner until all of the nuts have twisted off.
6. If reassembly is required, assemble the joint in the same manner as above; tighten the wedge bolt to 90 ft-lbs.



CONTENTS

Qty.	Description
1	6 in. Series 1106SD Split MEGALUG® Restraint
1	6 in. EBAA-Seal Gasket
4	¾ in. x 3½ in. Stainless Steel T-Bolts w/ Nuts
1	Gasket Lubrication Packet

Restraints Made in The USA

For use on water or wastewater pipelines subject to hydrostatic pressure and tested in accordance with either AWWA C600 or ASTM D2774

APPROXIMATE SHIPPING WEIGHT: 18.31 lbs.

0810-P

Copyright 2021 © EBAA IRON, Inc. All Rights Reserved

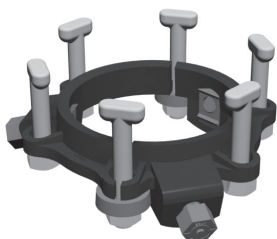
Series 1106SDSS16

6 inch Split MEGALUG® Restraint

With M.J. Accessories

For Ductile Iron Pipe

For Regular or Compact Fittings



1 1 0 6 S D S S 1 6

EBAA IRON SALES, Inc.

P.O. Box 857, Eastland, TX 76448

Tel: (254) 629-1731

Fax: (254) 629-8931

Toll: (800) 433-1716

contact@ebaa.com

www.ebaa.com

Made in the USA