



Series 1010DSMSS4

E-Z Flange™
Ductile Iron Flange Adapter

CONTAINS BOTH DOMESTIC AND IMPORTED HARDWARE

Installation Instructions

1. The Series 1000 E-Z Flange is designed for joining plain end ductile iron pipe, conforming to ANSI/AWWA C151/A21.51 (class 50-56 thickness) to standard AWWA C110 (class 150 dimensions) flanges.

All EBAA products intended for installation on ductile iron pipe are designed for and limited to use on ductile iron pipes that comply with the requirements of ANSI/AWWA C151/A21.51 and have a Brinell Hardness or equivalent measurement value that does not exceed 230BHN. **These requirements apply to the entire pipe wall profile at all restraining wedge engagement points and to the full penetration depth of each restraining wedge.***

2. The pipe ends must be cut smooth and square. (The E-Z Flange adapter should not be used on beveled end of the pipe.) All surfaces must be cleaned. Back the set screws out of the flange to clear the pipe and slide onto the pipe. Install E-Z Flange gasket on the pipe with the bevel of the gasket facing the E-Z Flange.

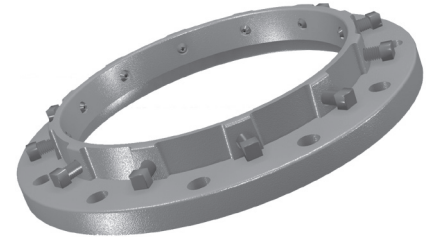
3. Position the pipe end square against the adjacent flange. Slide the gasket and E-Z Flange toward the adjacent flange.

4. Install and hand tighten the flange bolts keeping an equal gap around the flange.

5. Tighten the flange bolts evenly to the proper range of torque. (45-60 ft-lbs for 3 inch and 4 inch and 75-90 ft-lbs for 6 inch through 12 inch)

6. Tighten the set screws in a Alternating Manner until all are in firm contact with the pipe surface. After all set screws are in firm contact with the pipe, continue tightening in an alternating manner until all are tightened to the proper range of torque. (45 ft-lbs for 3 inch through 6 inch and 70 ft-lbs for 8 inch through 12 inch.)

*To learn more about this addendum, please visit: <https://ebaa.com/spec/dip>



CONTENTS

Qty.	Description
1	10 in. 1010 E-Z Flange
1	10 in. E-Z Gasket
12	7/8 in. by 4 in. Stainless Steel Machine Bolts w/ Nuts

Restraints Made in The USA



For use on water or wastewater pipelines subject to hydrostatic pressure and tested in accordance with either AWWA C600 or ASTM D2774

APPROXIMATE SHIPPING WEIGHT: 41.32 lbs.

Copyright 2023 © EBAA IRON, Inc. All Rights Reserved



Series 1010DSMSS4

E-Z Flange™
Ductile Iron Flange Adapter



1 0 1 0 D S M S S 4

EBAA IRON SALES, Inc.
P.O. Box 857, Eastland, TX 76448
Tel: (254) 629-1731
Fax: (254) 629-8931
Toll: (800) 433-1716
contact@ebaa.com
www.ebaa.com

Made in the USA