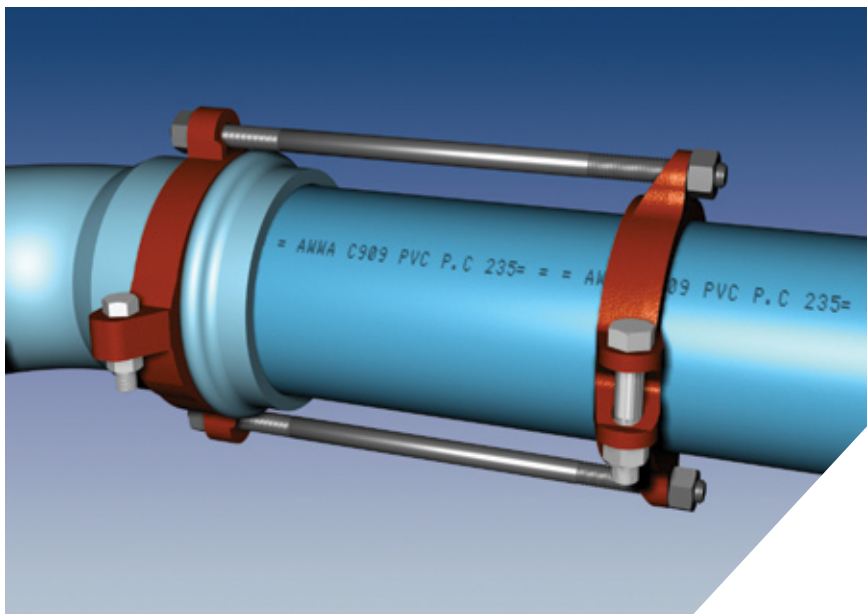


Series 2600

Restraint for C900 or C909 PVC Pipe
At PVC Fittings



Series 2606 Harnessing C909 PVC to a PVC Fitting.

Features and Applications:

- For use on AWWA C900 or C909 PVC Pipe when restraining molded or fabricated PVC Fittings
- Sizes 4 inch through 12 inch
- Minimum 2 to 1 Safety Factor
- Split Serrated Restraint Rings for ease of installation
- **MEGA-BOND®** Restraint Coating System
- Constructed of ASTM A536 ductile iron

For use on water and wastewater pipelines subject to hydrostatic pressure and tested in accordance with either AWWA C600 or ASTM D2774.

Table 1.1

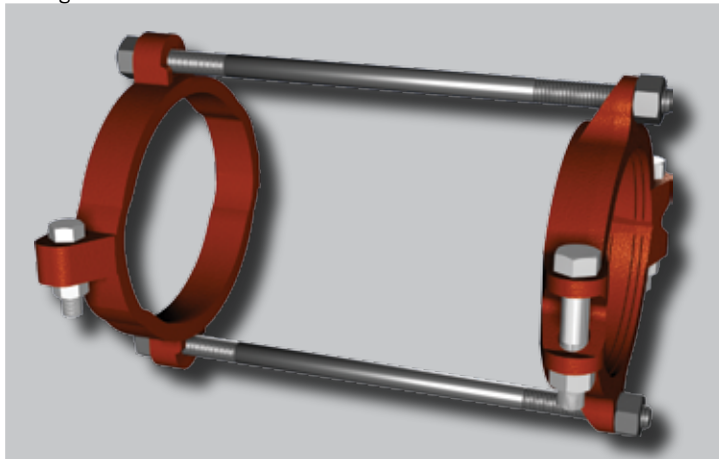
| Nominal Pipe Size | Series Number | Approx. Weight | C909 Class 235 | Pressure Rating (PSI)* | | |
|-------------------|---------------|----------------|----------------|------------------------|------|------|
| | | | | DR14 | DR18 | DR25 |
| 4 | 2604 | 18.5 | 235 | 305 | 235 | 165 |
| 6 | 2606 | 24.1 | 235 | 305 | 235 | 165 |
| 8 | 2608 | 30.5 | 235 | 305 | 235 | 165 |
| 10 | 2610 | 50.2 | 235 | 305 | 235 | 165 |
| 12 | 2612 | 61.0 | 235 | 305 | 235 | 165 |

NOTE: For applications and pressures not shown, please contact EBAA.
*Pressure rating is equal to the lowest pressure rating between either the PVC pipe or the PVC fitting.

Sample Specification

Restraint for AWWA C900 or C909 PVC Pipe at PVC Fittings shall consist of the following: The restraint device shall be manufactured of ductile iron conforming to ASTM A536, and shall be coated with MEGA-BOND. (For complete specifications on MEGA-BOND visit www.ebaa.com.) A split serrated ring shall be used on the plain end or spigot end of the PVC pipe. A split non-serrated ring shall go behind the gasket race of the PVC fitting. The two rings shall be harnessed together by an array of thrust rods. The combination of the restraint(s), thrust rods, and fasteners shall have a pressure rating listed in table 1.1 of the current product brochure. The restraint shall have a minimum two to one safety factor. The restraint device shall be the Series 2600, as manufactured by EBAA Iron, Inc., or approved equal.

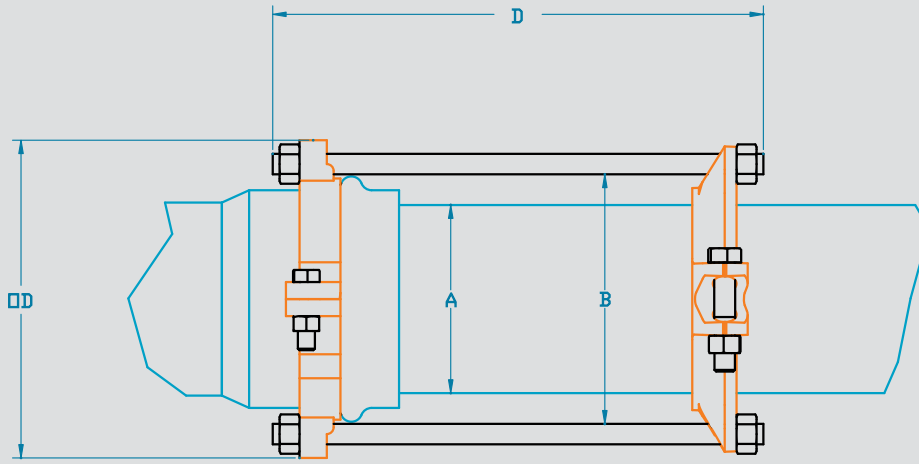
Packaged Items



Series 2600 Submittal Reference Drawing

EBAA IRON

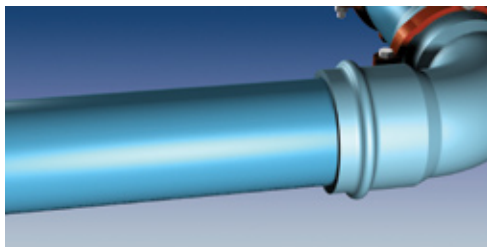
MADE IN USA



| Nominal Pipe Size | Series Number | A Pipe O.D. | B Maximum Bell O.D. Cleared | OD Max. Restraint O.D. (Casing Clearance) | D Overall Length | Thrust-Bolt (Number - Size) |
|-------------------|---------------|----------------|--------------------------------|--|---------------------|-----------------------------|
| 4 | 2604 | 4.80 | 6.75 | 10.40 | 13 | 2 - 3/4 x 13 |
| 6 | 2606 | 6.90 | 8.75 | 13.10 | 18 | 2 - 3/4 x 18 |
| 8 | 2608 | 9.05 | 12.25 | 14.90 | 18 | 2 - 3/4 x 18 |
| 10 | 2610 | 11.10 | 14.20 | 16.90 | 18 | 4 - 3/4 x 18 |
| 12 | 2612 | 13.20 | 16.90 | 19.60 | 18 | 4 - 3/4 x 18 |

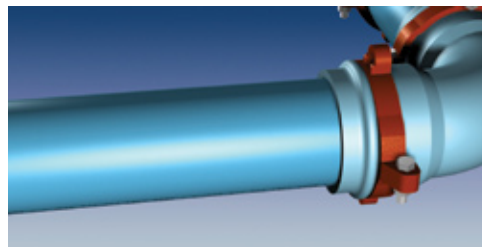
NOTE: Dimensions are in inches ± 1%, and are subject to change without notice.

Installation Instructions



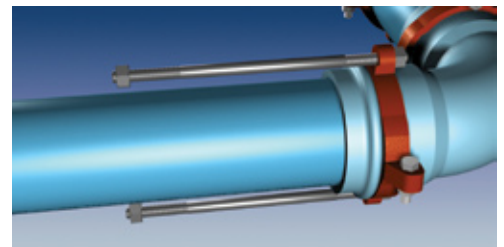
The Series 2600 is designed for restraining C900 or C909 PVC pipe at PVC fittings. The restraint has a split, serrated restraint ring on the plain end or spigot end of the pipe and a split, non-serrated ring on the PVC fitting.

1. Assemble joint per the pipe and fitting manufacturer's instructions.

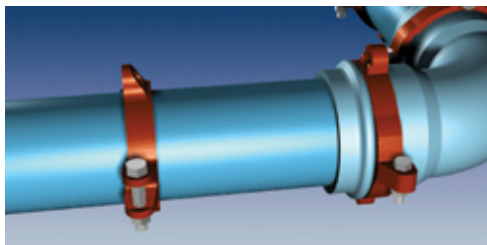


2. Install both halves of the split non-serrated bell ring on the fitting behind the gasket hump. Install the side bolts and tighten each to 110 ft-lbs. (60 ft-lbs on 4" and 6")

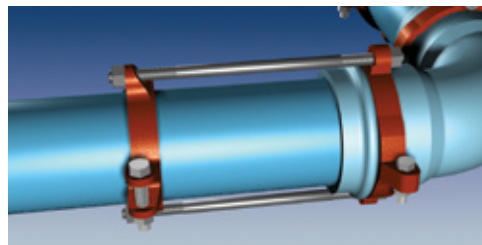
3. Slide the bell ring toward the gasket hump so that it fits snugly behind the gasket hump.



4. Remove the side bolts from the split serrated restraint ring. Use the provided thrust bolts to determine the proper location of the restraint ring on the spigot end of the PVC pipe.



5. Install both halves of the restraint ring at the proper location, tapping each half into place. Make sure that the complete ID of the ring is touching the pipe before installing the side bolts. Tighten the side bolts evenly to 120 ft-lbs. (70 ft-lbs on 4" and 6")



6. Place nuts on thrust bolts and hand tighten until they are snug. Allow enough room on the thrust bolts to fully engage the nuts.

Do not tighten thrust bolts enough to force the spigot end of the PVC pipe further into the bell of the joint.



EBAA IRON Sales, Inc.

P.O. Box 857, Eastland, TX 76448

Tel: (254) 629-1731

Fax: (254) 629-8931

(800) 433-1716 within US and Canada

contact@ebaa.com

www.ebaa.com