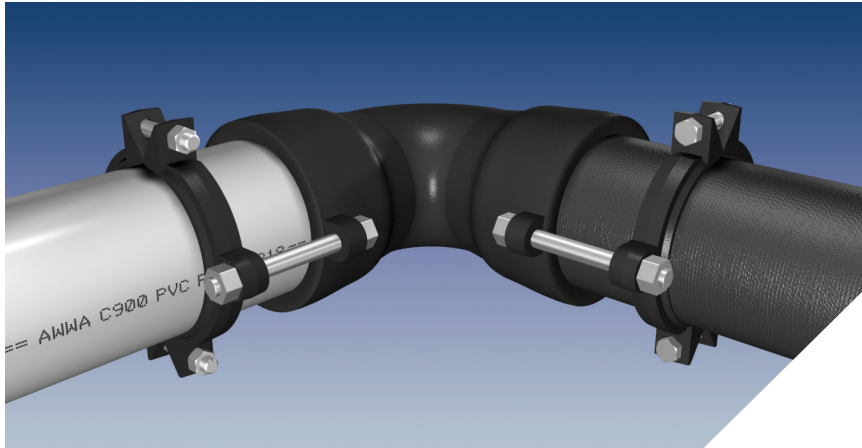


Restraint for Ductile Iron Pipe or C900 PVC Pipe at Ductile Iron Fittings



Series 15PF06TD restraining both ductile iron pipe and C900 PVC pipe at a push-on fitting with restraining ears.

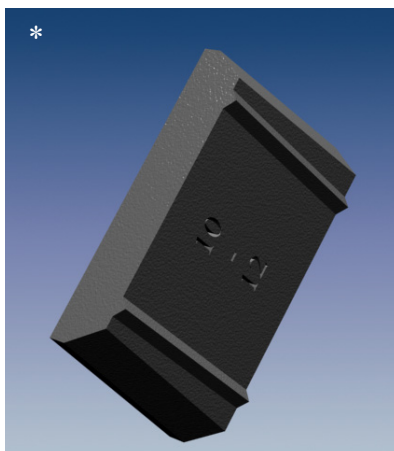
### Features and Applications:

- Restraint for Ductile Iron Pipe at ductile iron fittings, meeting ANSI/AWWA C151/A21.51 and ANSI/AWWA C150/A21.50
- Restraint for AWWA C900 PVC Pipe at ductile iron fittings
- Minimum 2 to 1 Safety Factor
- **MEGA-BOND®** Restraint Coating System  
For more on MEGA-BOND refer to [www.ebaa.com](http://www.ebaa.com)
- Constructed of ASTM A536 Ductile Iron

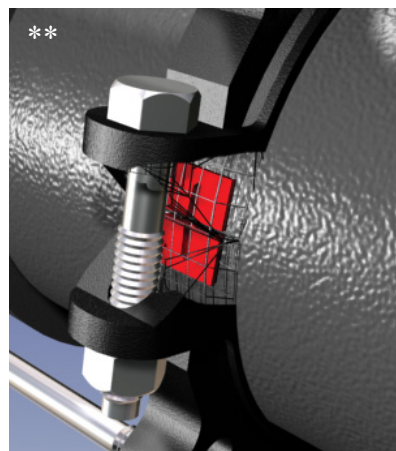
For use on water or wastewater pipelines subject to hydrostatic pressure and tested in accordance with either AWWA C600, C605, or ASTM D2774.

### Sample Specification

Restraint for push on bells supplied with restraint ears on AWWA C900 PVC pipe and Ductile Iron pipe systems shall consist of the following: The restraint shall be manufactured of ductile iron conforming to ASTM A536. A split, serrated ring, with a sufficient number of heat treated Tru-Dual inserts for gripping both Ductile Iron Pipe and PVC pipe, shall be utilized to grip the pipe in conjunction with a sufficient number of bolts connecting the serrated restraint to the joint. The restraint devices shall be coated using MEGA-BOND®. (For complete specifications on MEGA-BOND visit [www.ebaa.com](http://www.ebaa.com).) The restraint for push on fittings shall be the Tru-Dual Series 15PF00TD; as manufactured by EBAA Iron, Inc., or approved equal.



\*Tru-Dual Inserts are heat treated for hardness to ensure proper restraint on ductile iron pipe.



\*\*Two inserts are located near the clamp points on each half of the split serrated ring. This design provides maximum restraint on both ductile iron pipe and C900 PVC pipe enabling the product to be truly Tru-Dual.

Nominal Pipe Size	Series Number	Approx. Weight	Pressure Ratings PSI			
			D.I. Pipe DIP	DR14 Class 200	DR18 Class 150	DR25 Class 100
4	15PF04TD	9.64	350	200	150	100
6	15PF06TD	12.7	350	200	150	100
8	15PF08TD	16.7	250	200	150	100
10	15PF10TD	33.0	250	200	150	100
12	15PF12TD	35.0	250	200	150	100

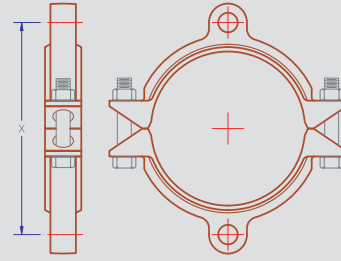
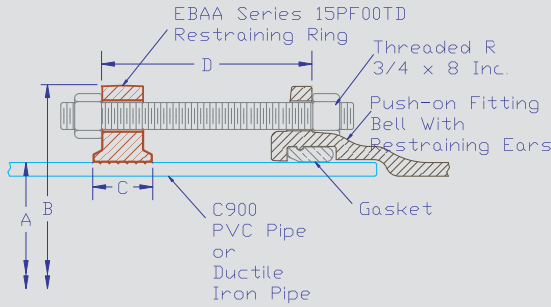
NOTE: For applications or pressures not shown, please contact EBAA. De-rate pressure if not all connecting rods were used.

# Series 15PF00TD Submittal Reference Drawing

EBAA IRON

MADE IN USA

## 15PF00TD Push On Joint Fitting



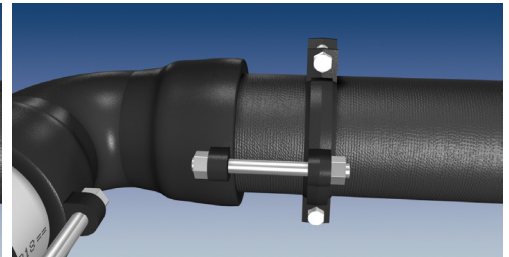
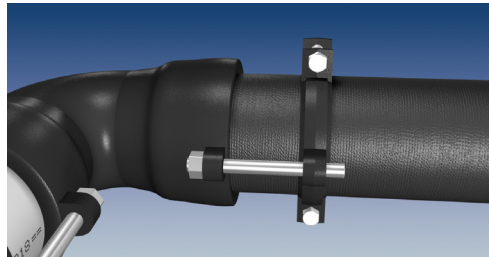
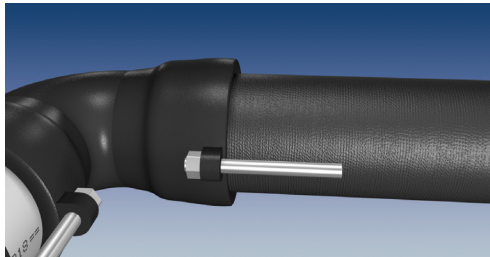
Nominal Pipe Size	Series Number	A	B	C	D	*	X
		Pipe O.D.	Max Restraint O.D. (Casing Clearance)	Restraining Ring Width	Restraining Ring Location	Thrust Bolt Quantity	Thrust Bolt Circle (Min. - Max.)
4	15PF04TD	4.80	9.25	1.25	6	2	7.5
6	15PF06TD	6.90	11.25	1.63	6	2	9.5
8	15PF08TD	9.05	14.75	1.63	6	2	11.32 - 13.00
10	15PF10TD	11.10	16.85	2.15	6	4	13.48 - 14.94
12	15PF12TD	13.10	19.45	2.15	6	4	15.94 - 17.66

NOTE: Dimensions are in inches and are subject to change without notice.

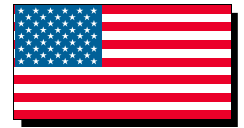
\*Derate pressure if not all connecting bolts were used.

### Installation Instructions

for both C900 PVC Pipe and Ductile Iron Pipe



- Identify the Pipe. The Series 15PF00TD is designed for restraining C900 PVC pipe or Ductile Iron pipe at ductile iron fittings supplied with restraining ears. It has a split; serrated restraint ring with Tru-Dual® inserts on the spigot and attaches to the joint with connecting rods.
- Assemble joint per the pipe manufacturer's instructions.
- Using the connecting rods to determine the proper restraint location, install both halves of the restraint by tapping them into place. Allow enough room on the connecting rods to fully engage the nuts. Make sure the complete I.D. of the restraint is touching the pipe before installing and tightening of side bolts. Side bolts are to be evenly tightened to 60 ft-lbs of torque (110 ft-lbs on 8 inch, 10 inch, and 12 inch).
- Tighten the connecting bolts until snug. Do not over tighten connecting bolts as to move the spigot further into the joint.



### EBAA IRON Sales, Inc.

P.O. Box 857, Eastland, TX 76448

Tel: (254) 629-1731

Fax: (254) 629-8931

(800) 433-1716 within US and Canada

contact@ebaa.com

www.ebaa.com