

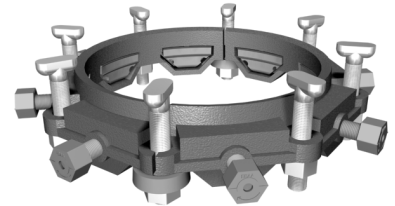


Series 2006SVH

Split Restraint and Accessories for DI or C900 PVC Pipe
at Mechanical Joint Fittings

Installation Instructions

1. The EBAA Iron Series 2000SVH is designed for restraining existing DI Pipe or PVC pipe at existing mechanical joint fittings or other appurtenances. (This product is not intended for use as a restraining anchor in the mid span of a pipe.)
2. Identify the pipe. The 4 inch through 12 inch size may be used on DI pipe, C900 or IPS PVC pipe. Check to see if the spacers under the screws are in place. If the pipe is ductile iron O.D., proceed with spacers in place. If the pipe is PVC IPS O.D., remove the spacers.
3. Clean and clear the existing joint. Replace the existing gasket with a field cut gasket if necessary. Lubrication and additional cleaning should be provided by brushing the gasket and the plain end with soapy water or an approved pipe lubricant meeting the requirements of ANSI/AWWA C111/A21.11.
4. Remove the clamps from the split gland. Loosely assemble the halves on the pipe by installing the T-bolts. Hand tighten everywhere except at each split.
5. Assemble each clamp so that the angled surfaces of the clamp mate with the angled surfaces on each side of the split. Insert the long T-bolts (provided) through the clamps and hand tighten.
6. Tighten the T-bolts. Tighten the bolts to the normal range of bolt torque [45-60 ft-lbs for 3 inch and 75-90 ft-lbs for 4 inch through 12 inch] while at all times maintaining approximately the same distance between the gland and the face of the flange at all point around the socket. This can be accomplished by partially tightening the bottom bolt first, then the top, next bolt at either side, finally the remaining bolts. Repeat the process until all bolts are within the appropriate range of torque. The use of a torque indicating wrench will facilitate this procedure.
7. Tighten the torque limiting twist off nuts in a clockwise direction (direction indicated by arrow on top of nut) until all wedges are in firm contact with the pipe surface. Continue tightening in an alternate manner until all of the nuts have twisted off.
8. If reassembly is required, assemble the joint in the same manner as above; tighten the wedge bolt to 70 ft-lbs.



CONTENTS

- 1 - 6 inch 2000SVH MEGALUG
- 1 - 6 inch EBAA Seal MJ Gakset
- 4 - 3/4 by 31/2 T-Bolt with Nuts
- 1 - Gasket Lubricant

Restraints Made in the USA

For use on water or wastewater pipelines subject to hydrostatic pressure and tested in accordance with either AWWA C600 or ASTM D2774

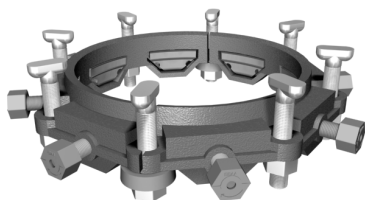
APPROXIMATE SHIPPING WEIGHT: 19.40 LBS.

0118-A

©EBAA IRON, Inc.

Series 2006SVH

Split Restraint and Accessories for DI or C900 PVC
Pipe
at Mechanical Joint Fittings



* 2 0 0 6 1 9 2 2 0 8 *

EBAA Iron Sales, Inc.

P.O. Box 857, Eastland, TX 76448

Tel:(254) 629-1731

Fax:(254) 629-8931

(800) 433-1716 within US and Canada

contact@ebaa.com

www.ebaa.com

Made in the USA